

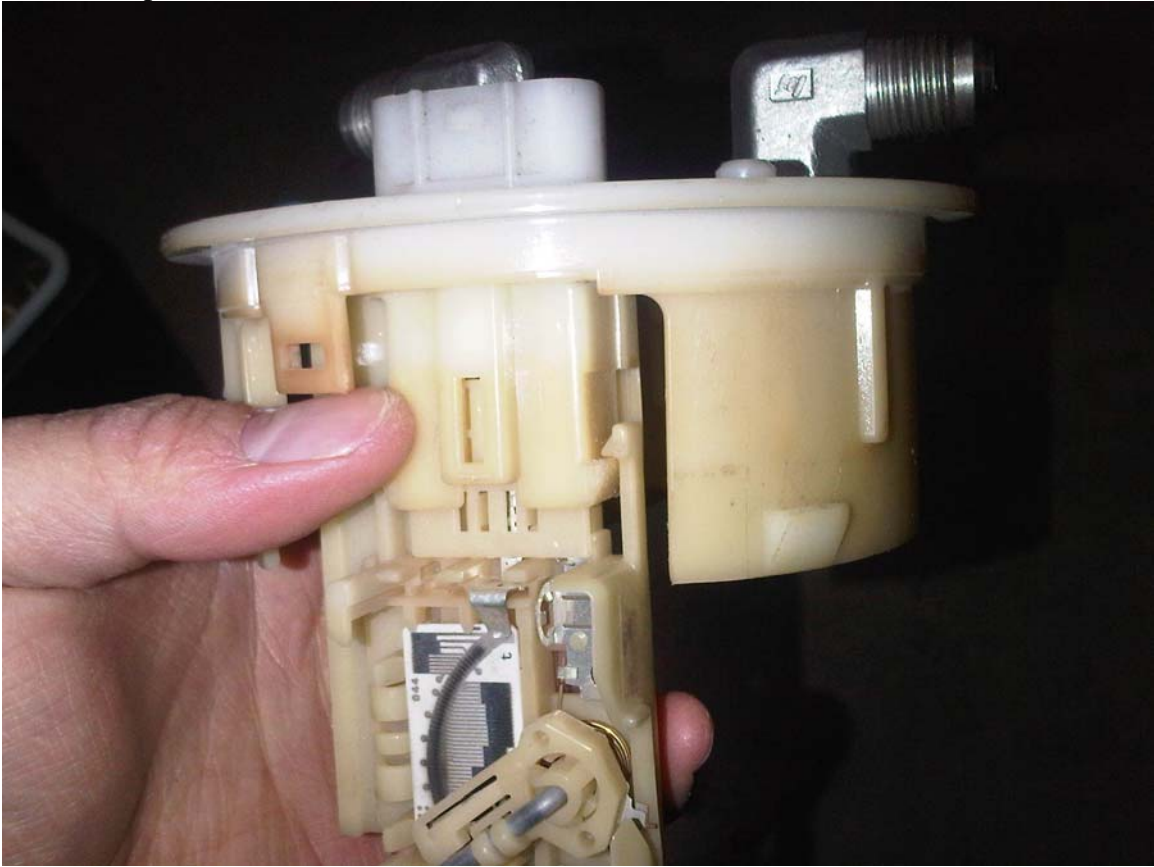
Pull cage assembly out of gas tank.

Remove electrical connection at top of cage.

Locate the 4 push tabs holding the top half and bottom half of the cage assembly together.



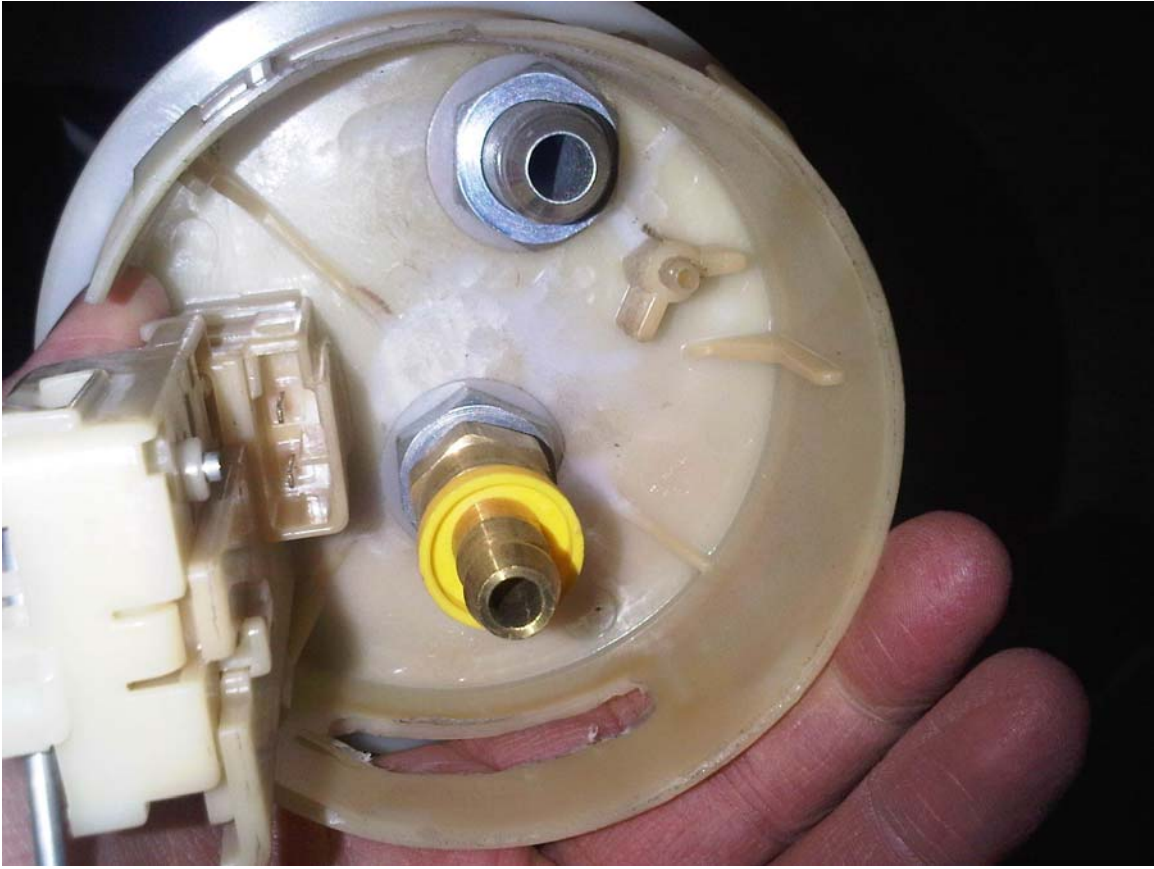
Now the top half looks like this alone.



You will be drilling 2 holes for the black bulk head 90 fittings. One will be right above the stock fuel pump. The other will be somewhere so that the fuel can return to the tank easily. (There is a lot of liberation there)



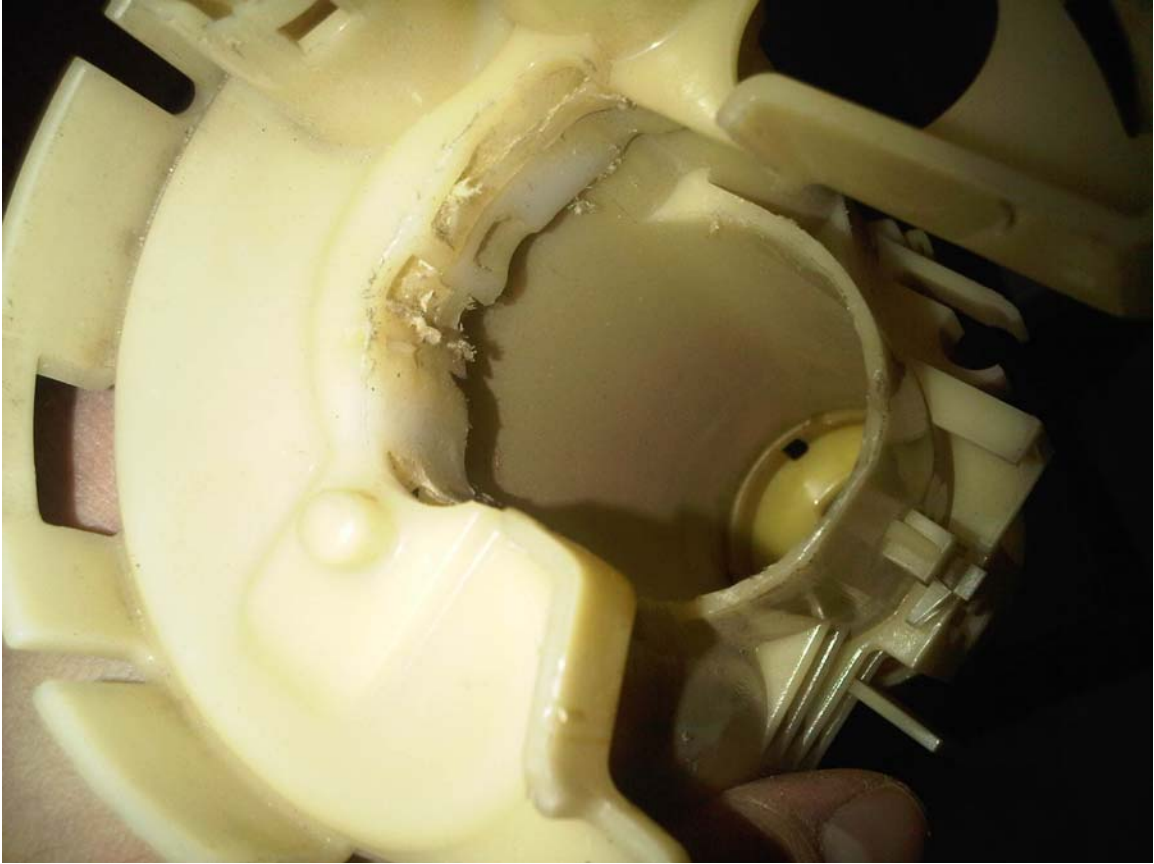
Speaking about the fuel feed one, (the one above the stock pump) Drill your hole and install the bulk head fitting in and then on the inside of the assembly you will need the nylon washer and nut to hold it in place. This one will also have a brass push-lock fitting that threads onto it as well. This is where the new pump's outlet will go.



Might want to even carve a window to stick a wrench in there easier for that feed fitting...



Next up would be fitting the Walbro which is slightly larger than factory. Some quick dremel work on the cavity and it should look like this....



Then you will need to cut a slot on the bottom cap assembly for the sock filter to fit with the Walbro...



Lastly, you will need to do the return line fitting....We used to do this.....



Looking down at the bottom half of the cage assembly there was a channel that housed the FPR from the factory, remove that, drill a straight drop into that channel through to the bottom of the cage. Then a small hole in the bottom cap where it comes through and you're about done. All you need to then do is connect the power and ground...